

Memorandum

To: Finance, Expenditure and Legal

From: Justin Novak, Project Manager

Date: November 7, 2024

RE: Storm Easements for Dakota County Rural Water System Waterline Main

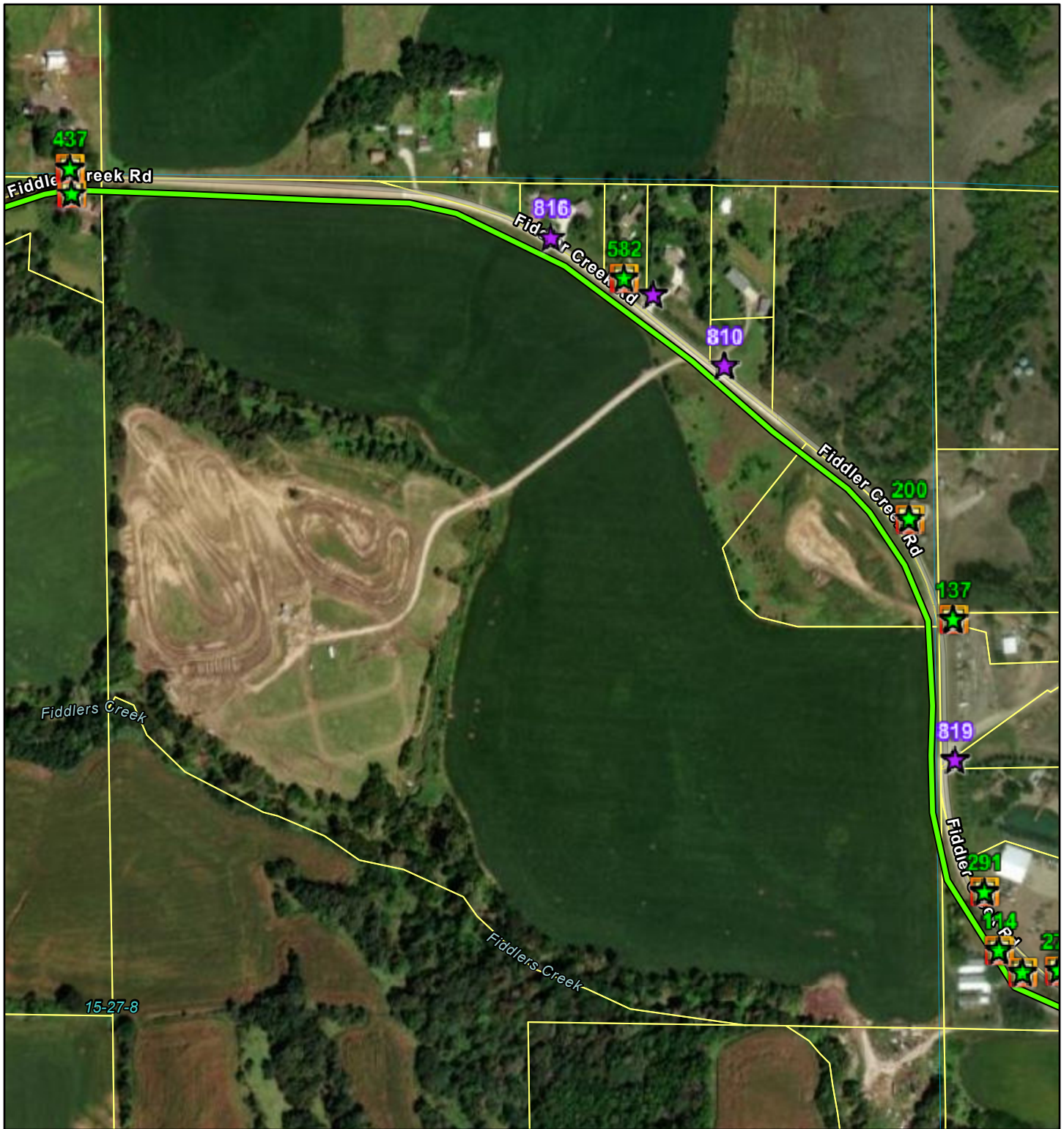
The Dakota County Rural Water expansion project is now complete, and the District is now able to serve additional customers along the original water mains outside of Homer. With the increased capacities in the old water mains, we have had multiple signups to connect meter pits along Fiddler Creek Rd.

The original water main easements for the Storm properties do not cover our right of access to where the water main is located in the field. Our easement reads 15' both sides of the water main location, giving us a total width of 30'. The problem is our water main is approximately 35' into their field off the edge of ROW, leaving us a space of 20' between the ROW and water main we don't have rights to access through.

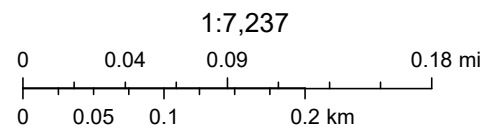
Meeting with the Storm family they were willing to give us new easements with 100' width access along their properties in exchange for 1 meter pit connection at Mike Storm's residence. The meter pit connection has a value of \$4,000. We must have access to this existing water main to install 4 meter pits for new customers and any future issues that might arise with the main.

It is staff's recommendation the Subcommittee recommend to the Board that the General Manager be authorized to execute the proposed Easement with the Storms in exchange for 1 new meter pit connection, subject to changes deemed necessary by the General Manager and approval as to form by District Legal Counsel.

Dakota County Rural Water System



11/4/2024



Esri Community Maps Contributors, Iowa DNR, Nebraska Game & Parks Commission, © OpenStreetMap, Microsoft, Esri, TomTom, Garmin, SafeGraph, GeoTechnologies, Inc, METI/NASA, USGS, EPA, NPS, US Census Bureau, USDA, USFWS, Maxar